

Historic, Archive Document

Do not assume content reflects current scientific knowledge, policies, or practices.

62.67

LIBRARY
JUN 26 1893
U. S. Department of Agriculture

FLORISTS'

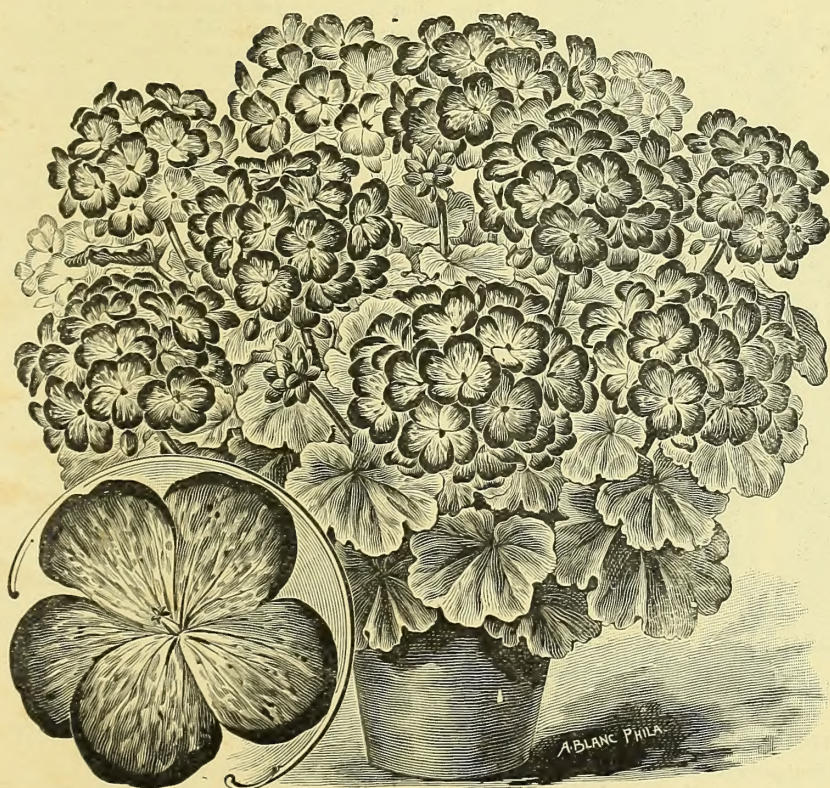
WHOLESALE PRICE LIST OF

Plants, Bulbs, Seeds, &c.

No. 5

THE STORRS & HARRISON CO.,
PAINESVILLE, LAKE CO., OHIO.

From Date
to June 1st,
1897



GERANIUM MAD. BRUANT.

TERMS OF SALE.

Orders from unknown correspondents must be accompanied by cash or satisfactory reference.

Three will be furnished at dozen rates, and 5 at 100 rates, if order amounts to \$3.00 or more.

All goods delivered at Express office or Depot here. No charge for packing or packages.

Orders to be sent C. O. D. must be accompanied by cash to one-fourth of the value of goods ordered, to guarantee acceptance.

For wholesale rates of Fruit Trees, Vines, etc., and hardy Ornamentals of all classes see our Trade List No. 4.

On seeds in packets, a discount of 50 per cent. will be made from the prices in Catalogue No. 2.

On seeds in bulk, not quoted in this by the ounce, $\frac{1}{4}$ pound, pound, pint, quart and bushel, 25 per cent. Write for prices of Bulk Seed wanted in larger quantities than above.

Prices quoted are for plants from $2\frac{1}{2}$ -in. pots, except noted.

CATALOGUES.

We issue the following catalogues (send for copy if you do not receive them) free to the trade:

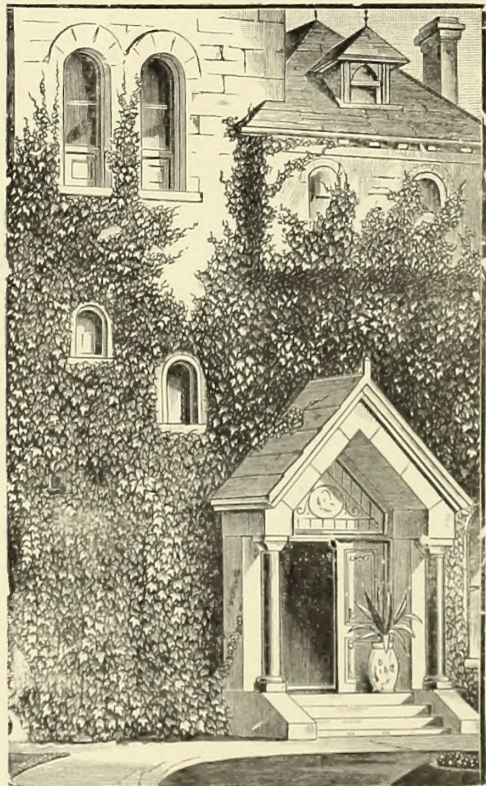
No. 1. Descriptive Catalogue—Fruit and Ornamental, Deciduous and Evergreen Trees and Shrubs, Small Fruits, Grape Vines, Roses, Hardy Plants, etc.

No. 2. Spring Retail Catalogue—Full line Flower and Vegetable Seeds, Greenhouse, Bedding and Hardy Plants, Roses, Shrubs, Vines, Trees, etc. Issued in January.

No. 3. Fall Retail Catalogue—Bulbs, Winter-Blooming and Hardy Plants, Shrubs, Trees, etc. Issued in August.

No. 4. Wholesale Trade List for Nurserymen, Dealers and Florists—Fruit and Ornamental Trees, Shrubs, Vines, etc. Issued semi-annually, January and August.

GENERAL COLLECTION OF PLANTS FOR FLORISTS.



AMPELOPSIS VEITCHII.

AMPELOPSIS VEITCHII

(Boston Ivy.)

A beautiful hardy climber, and one of the best climbing plants for covering stone or brick walls. Strong plants, 3 to 4 feet, \$8.00 per 100; 2 to 3 feet, \$6.00 per 100.

ALAMANDA WILLIAMSII.

A dwarf or bush variety of this old favorite house plant. Most of the Allamandas are of climbing habit, but in this variety we have a handsome plant of dwarf, compact shape, with large trusses of flowers at the tip of every branch; each flower 3 to $3\frac{1}{2}$ inches across. Color, rich golden yellow; very fragrant. It continues to flower the whole summer. \$10.00 per 100.

ASPARAGUS.

Plumosus Nanus. $2\frac{1}{2}$ -in. pots, \$8.00 per 100. 3-inch pots, \$1.50 per doz.

Tenuissimus, per 100, \$4.00.

Sprengeri. A beautiful new variety of drooping habit; the fronds are frequently four feet long, making it an excellent plant for hanging baskets or vases. A desirable house plant, as it withstands dry atmosphere, and will succeed in almost any situation. Strong plants, \$8.00 per 100.

AGAPANTHUS UMBELLATUS.

A beautiful ornamental plant, bearing large clusters of bright blue flowers on long flower stalks, and lasting a long time in bloom. \$8.00 per 100.

ABUTILONS.

Souv. de Bonn. A very distinct and striking plant, with large bright green leaves, distinctly edged with a pure white band; a strong robust grower, forming fine specimens in a very short time; fine for large vases and porch boxes. \$5.00 per 100.

Eclipse. Of trailing habit; foliage marked deep green and yellow.

Golden Fleece. Bright golden yellow; very free.

Splendens. Deep red.

Thompsoni Plena. Double orange flowers; foliage variegated yellow and green.

Unless noted, \$4 per 100.

Quantity

NAMES OF BULBS, PLANTS OR SEEDS WANTED.

Price.

Amount brought over.



ANEMONE WHIRLWIND.

A semi-double form of Anemone Japonica Alba with pure white flowers 2½ to 3 inches across, flowers of more substance, lasting much longer than the single varieties. Strong field grown plants \$6.00 per 100. Pot plants, April 1st, \$3.00 per 100.

ANEMONE JAPONICA.

Alba. Pure white, yellow center.
Rubra. Deep rose, yellow center.
 Strong field grown plants, \$6.00 per 100.
 Pot plants after April 1st, \$3.00 per 100.

ACHILLEA—THE PEARL.

Pure white, double flowers; fine for cemetery planting. \$5.00 per 100.

AMARYLLIS JOHNSONI.

Strong flowering bulbs \$20.00 per 100.

ARUNDO DONAX VARIEGATA.

A hardy, broad-leaved ornamental grass, growing six to eight feet high. \$1.00 per doz.

ANTHEMIS TINCTORIA.

A hardy golden marguerite, producing single yellow flowers during the entire summer; very useful for cutting. \$4.00 per 100.

AQUILEGIA.

Cerulea. \$10.00 per 100.
Chrysantha. \$5.00 per 100.

ASCLEPIAS TUBEROSA.

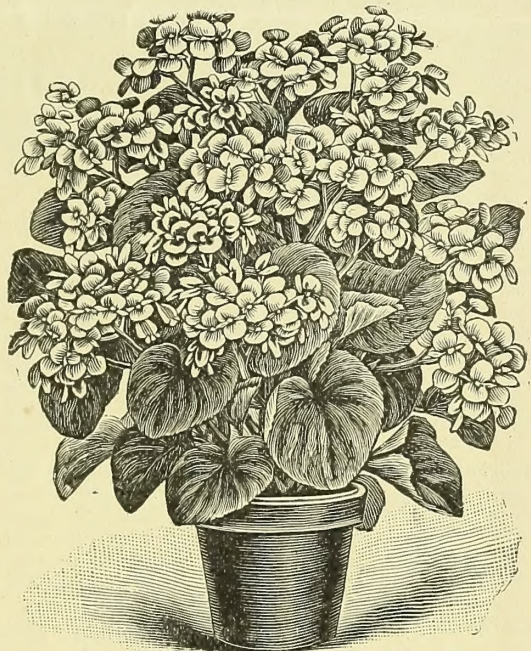
A beautiful hardy native plant. Flowers, brilliant orange red, on stems 2 feet high, \$5.00 per 100.

**BEGONIAS—FLOWERING,
 New and Scarce Varieties.
 GOLIATH AND MASTODONTE.**

Two grand new French Begonias of the semperflorens type, of gigantic growth, and fine branching habit, making large, showy plants, 30 to 36 inches high, and 18 to 24 inches in diameter in a single season. The flowers are of immense size, in large, rather compact clusters. They make excellent bedding plants in summer, being covered with flowers from the ground up, and if lifted and brought into the house will continue to bloom all winter.

Goliath. Leaves large, round, glossy green, slightly serrated. Flowers large, in large clusters, on stiff stems, carrying them well above the foliage. Color rosy white. \$3.00 per doz.

Mastodonte. Of the same strong habit of growth as Goliath and identical with it in every respect, except color, which is a delicate, tender rose. \$3.00 per doz.



BEGONIA PURITY.

Purity. The most prolific bloomer of all the white Begonias, being a mass of bloom both summer and winter. It is an excellent plant for pot culture, making a neat compact plant, that is nearly as broad as high, and completely covered with glistening, pearly white flowers. Purity is a seedling of Schmidt's, crossed with Vernon, possessing the free-flowering qualities of both, and in habit of growth is far superior to either. As a bedding plant it has few equals; if given a light, rich soil, it is a mass of bloom the entire summer. \$15.00 per 100.

SEMPERFLORENS ELEGANTISSIMA ALBA.

A grand new Begonia that is decidedly distinct from any other white variety. The flowers are very large, pure glistening snow white, on stiff, erect stems. Plant a fine free grower, and when in bloom the foliage is nearly hidden under the profusion of snow-white flowers. \$1.50 per doz.

BEGONIAS—GENERAL COLLECTION.

Argentea Guttata. Purple bronze leaves, with silver markings, flowers white. \$4.00 per 100.

Cuprea. Beautiful dark green, velvety foliage. A strong, healthy grower. Flower rosy white. \$4.00 per 100.

Duchartrei. Foliage lanceolate, sharply pointed, dark bronze green on upper surface; reddish purple on underside, flower large in good sized panicles, pure white. A charming variety for Winter blooming. \$6.00 per 100.

Erfordia. One of the most prolific bloomers, continually covered with clusters of its delicate rosy salmon flowers. An excellent variety for outdoor bedding, growing and blooming in our hot sun equal to the best bedding geraniums, being a mass of bloom the whole season, and if lifted and potted before frost will continue to flower all winter. \$4.00 per 100.

Incarnata. Large, rose colored flowers, on large stems, a fine cut flower variety. A very free winter blooming variety. \$5.00 per 100.

Mme. Lionnet. Beautiful rosy bronze foliage, the brightest of all the dark leaved varieties. \$1.00 per doz.

Metalica. A good grower and free bloomer; under side of leaf and stem hairy; the surface of a lustrous metallic or bronze color, veined darker, flowers white. \$1.00 per doz.

Nivea. A grand winter blooming and summer bedding plant, being covered with flowers the year around. The flowers are a delicate pink when in bud, expanding through lighter shades to pure white when fully open. \$1.00 per doz.

M. de Lesseps. In the style of *Argentea Guttata*, but with much larger leaves, beautifully spotted with silver. \$5.00 per 100.

Olbia. A grand variety. Leaves from 7 to 10 inches in diameter, separated into deep, sharp points. The color is varying shades of brown and red, the young leaves being very bright. Flowers lemon white; one of the richest colored foliage varieties. \$7.00 per 100.

Otto Hacker. Plant a strong, vigorous grower, with large, shining, deep green leaves, 8 to 10 inches long, with three to four triangular lobes on upper edge. The flowers are borne in immense pendant clusters, 8 to 10 inches across, twelve to twenty-five large flowers in a cluster. Color, a beautiful bright coral red. \$6.00 per 100.

Paul Bruant. A free-growing variety, and one that soon makes a fine specimen plant of bushy tree form. Leaf of heavy texture, and of deep olive green color. The flowers are produced very freely, on long, graceful stems. Color delicate rose changing to white. \$8.00 per 100.

President Carnot. A remarkable strong growing variety, of stiff, upright habit; foliage very large; flowers beautiful coral red in large pendant panicles similar to *Rubra*, but very much larger. \$6.00 per 100.

Pictaviense. Underside of leaf purplish red; face bronzy green, dotted silver; flowers in large clusters, well above the foliage; an elegant variety. \$8.00 per 100.

Rubra. A favorite with everyone; flowers rich coral red, in large pendant panicles. One of the best. \$4.00 per 100.

Sempervlorens Elegans Rosea. An excellent plant for pot culture, but its greatest value is as a bedder, where it is a strong rival with our brightest colored geraniums, with its mass of bright, rosy carmine flowers. \$6.00 per 100.

Thurstoni. A variety with beautiful, glossy foliage; makes a grand bedding variety in partial shade. \$4.00 per 100.

	Per 100
Alba Picta	\$4 00
Alba Picta Rosea	4 00
Marguerite	4 00
Metallica Valutina	4 00
Richardsoni	4 00
Sandersoni	4 00
Vernon	3 00
Weltoniensis	4 00
Wettsteinii	3 00

REX BEGONIAS.

We offer a fine variety of this beautiful class of foliage plants in 12 named sorts. \$5.00 per 100.



BEGONIA. (Tuberous Rooted.)

BEGONIAS—TUBEROUS ROOTED.

Fine, large, well-ripened bulbs, from one of the best European collections.

	Per 100
Finest Single Named Colors , white, pink, scarlet, crimson and yellow.....	\$3 50
Finest Single Mixed	3 00
Finest Double Named Colors , white, pink, scarlet, crimson and yellow.....	9 00
Double Mixed Colors	8 00

CHRYSANTHEMUMS.

Introduction of 1897. The descriptions are those given by the introducers.

Golden Trophy, (Hill & Co.) A grand early yellow to follow Marion Henderson; a dwarf grower, requires no tying; foliage very beautiful, and quite up to the flower; very large for October, compact, crowded with petals, incurving into a complete golden ball; has been characterized as an "Early Bonnaffon." Keeps and travels wonderfully well. This will be found very profitable by florists, as it bears close planting and requires no tying. Received N. C. S. certificate under name of "Golden Dawn," which proved to be a duplicate. Fifty cents each; \$5.00 per dozen; \$35.00 per 100.

Thanksgiving. (Rawson).

Certificated at both New York and Philadelphia, November, '96. Height, 3½ to 4 feet, of sturdy habit and nice foliage; flowers large; color, fresh, delicate even shade of pink; mid-season and later; keeps very well. Grown cool is in season at Thanksgiving; very distinct and a fine exhibition variety as well. Fifty cents each; \$5.00 per dozen; \$35.00 per 100.

Adelaide. (Rieman).

Certificated at Cincinnati, November, 1896. First prize white seedling at Indianapolis. A very fine white variety; extra good stem and foliage; fine, compact flower, especially recommended for commercial purposes. The raiser also recommends it as a bush plant. Will rank among whites as H.

W. Rieman does among yellows. Fifty cents each; \$5.00 per dozen; \$35.00 per 100.

Western King. (Smith and Son). This, we believe, is the best white yet introduced for commercial or exhibition blooms, or for plants either bush or single stem. An incurved flower with outer petals slightly reflexing, pure white. Maturing November 1st. Height, 3½ to 4 ft., good from either bud. Stem and foliage excellent. No variety has been as highly commended; in 1895 was recommended for certificate by all five committees of the C. S. A. Last fall it received cash prize at Syracuse as best seedling, and at Philadelphia as best white seedling. 50c. each; \$5.00 per doz.; \$35.00 per 100.

Choice Varieties of Last Year's Introduction and others of special merit.

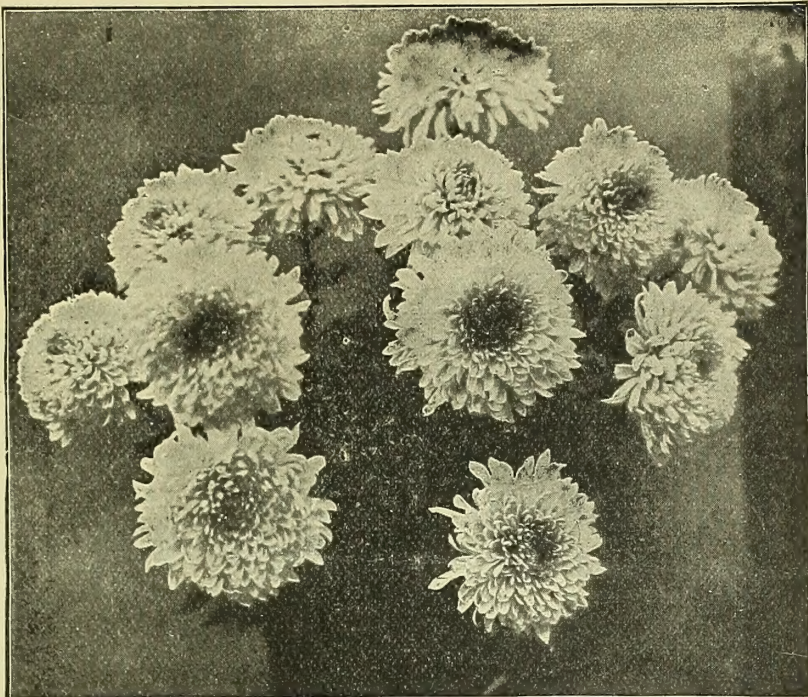
Modesto. Exceptionally meritorious. The finest yellow yet produced, either for exhibition or the trade. Intense in color, unsurpassed in size, of an incurved, slightly whorled form; with very high, full center. Maturing November 15th. \$1.00 per doz.

Mrs. Perrin. A wonderfully clear bright pink, quite free from magenta, the brightest shade of pink yet produced in the chrysanthemum. The flower is of globular, incurved form and of fine satin finish. Awarded first premium wherever exhibited as best of its color. \$5.00 per 100.

Mrs. Wm. C. Egan. A fine large flower of the Ada Spaulding type, but much larger. Color crimson pink at the base, shading at the apex to light sulphur, suffused with buff on outside of petals. A strong, healthy grower, with fine foliage. \$6.00 per 100.

Buff Globe. Enormous globe shaped flower; pale chrome yellow shading to buff. \$6.00 per 100.

Mrs. Henry Robinson. A large, early white variety, of exceptional merit with immense incurved, broad channeled petals of great substance, and of the purest white. From a flat incurved form it gradually changes into a perfect ball of snow 16 to 18



DAYDAWN.

inches in circumference. A fine healthy grower, and one that is easily managed. \$5.00 per 100.

Daydawn. A grand, large early white variety, center creamy yellow when opening, gradually changing to pure white in the fully open flower. While the flower is large and fully double, it is of informal and graceful arrangement, on good stiff stems with fine heavy foliage. \$4.00 per 100.

Glory of the Pacific. An extra early pink, being in good shape for cutting by October 8th. It is of fine size and depth, with broad petals which reflex showing the clear pink color to excellent advantage. \$5.00 per 100.

Wm. Simpson. One of the earliest of the large flowered varieties. Color a pleasing shade of delicate pink, a little lighter than "Maud Dean." A good, strong, healthy grower, stiff stem from four to five feet high, with clean foliage. \$5.00 per 100.

Indiana. Immense, full, globular flower, nicely incurved. Color clear bright pink, outside petals a little lighter. Has been grown measuring 22 inches in circumference. A grand show variety. \$4.00 per 100.

Pink Ivory. (Miss A. L. Dalskov). A sport from Ivory, the most popular of all white chrysanthemums; it is identical with Ivory in every respect except color, which is a beautiful shell pink. \$5.00 per 100.

CHRYSANTHEMUMS—GENERAL COLLECTION.

- | | |
|----------------------------|--------------------|
| Ada Spaulding, | Eugene Dailedouze, |
| Beauty Poitevine. | Gov. Matthews, |
| Beauty Lyonaise, | Golden Wedding, |
| Challenge, | Gorgeous, |
| Cullingfordi, \$5 per 100, | Gloriosum, |
| Charity, | Harry E. Widener, |
| Clinton Chalfant, | Harry May, |
| Dean Hole, | Harry Balsley, |
| Emily Dorner. | Ivory, |
| Enfant des D'Mondes, | Inter Ocean, |
| \$4 per 100. | Joey Hill, |

J. A. Pettigrew,
Kioto,
J. H. White,
Lady Playfair,
L. Canning,
Lillian B. Bird, \$4 per
100.
Miss Minnie Wanamaker
Major Bonnaffon,
Miss M. M. Johnson,

Marion Henderson,
\$5 per 100.
Mme. F. Bergmann,
\$4 per 100.
Miss Louise D. Black,
Mrs. Jerome Jones,
\$4 per 100.
Miss Kate Brown.
Mrs. J. G. Whilldin,
Mrs. E. G. Hill,

Mrs. L. C. Madeira,
Mrs. C. Lippincott,
Mrs. J. G. Ills,
Mattie C. Stewart,
Mrs. George Bullock,
Mrs. E. D. Adams,
Mrs. Fottler,
Mrs. Maria Simpson,
Mrs. Potter Palmer,
Minerva,
Niveus,

Pitcher and Manda.
Philadelphia, \$5 per 100,
Pres. Wm. R. Smith,
Sunrise,
The Queen,
V. H. Hallock,
Vivand-Morel, \$4 per
100,
W. H. Lincoln,
W. A. Manda,
Yellow Queen,

Unless noted, \$3.00 per 100.



SINGLE FLOWER OF
CANNA AUSTRIA.

NEW GIANT ORCHID FLOWERED CANNAS.

This magnificent new race of Cannas is the sensation of the year in floral novelties. In size and brilliancy of flowers and majestic Musa-like foliage, they are entirely distinct and far in advance of any of the large flowered Cannas to date; of remarkably strong growth, they soon make fine specimen plants, with twenty to twenty-five strong stems bearing immense heavy leaves, each stem crowned with tall spikes of large, orchid-like flowers, many of which when fully expanded measure six to seven inches across.

Italia. Another giant flowering variety from the same

source as Austria, and by some would be considered the more showy of the two. The plant is of the same strong habit of growth with large deep green foliage. The flowers, while not quite as large, are even more gorgeous on account of their glowing colors. The three upper petals are golden yellow with a large blotch of orange scarlet in center of each, the center and lower petals scarlet, with a narrow edge of golden yellow. \$7.00 per doz. Strong pot plants.

Austria. Flower of immense size, many of them fully six inches across, the petals are very broad with slightly reflexed edges resembling very closely some of the Orchid family. The plant is remarkable for its sturdy rank growth, forming massive clumps six to seven feet high, covered from the ground up with large deep green Musa-like foliage. Plants set out early in the season will before mid-summer form clumps with from 20 to 30 strong stems, each stem surmounted by tall spikes of golden yellow flowers standing upright like immense lilies. \$3.00 per dozen; \$20.00 per 100. Strong pot plants.

LARGE FLOWERING DWARF CANNAS.

A select list of new and scarce varieties:

Souvenir Antoine Crozy. A magnificent, new gilt-edged variety. The flowers are very large, with well rounded petals, which are of the most intense scarlet crimson, bordered with a broad band of rich golden yellow; trusses very large and erect, carrying an immense number of large flowers. Nearly every flower stalk branches, producing two perfect spikes. Very free bloomer. \$12.00 per 100.

Mad. Alphonse Bouvier. Color light, bright scarlet, laced on the edge with gold, and also marked in the throat of the flower; very large and finely spread. One of the finest of the gilt-edged varieties. \$10.00 per 100.

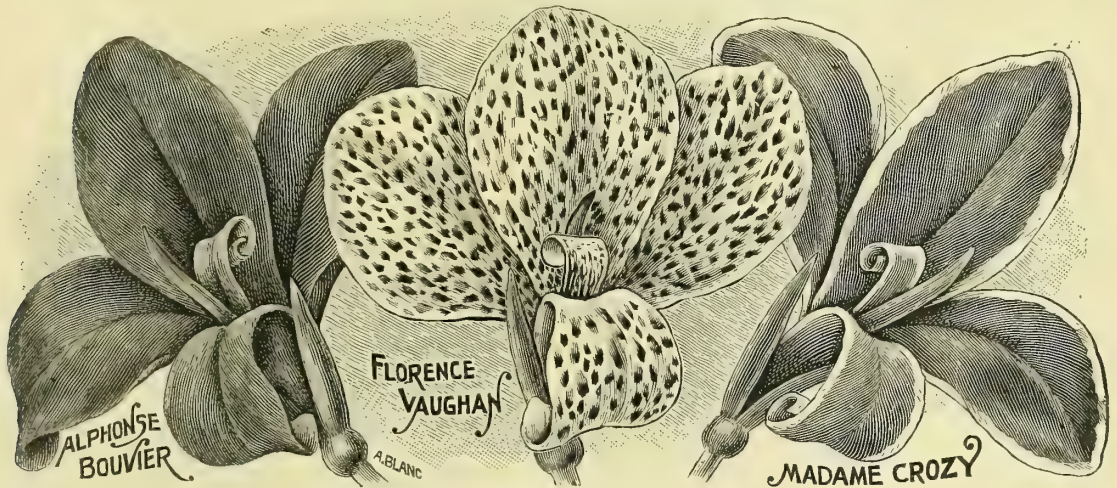
Papa Canna. A grand addition to our list of red flowering Cannas, and one that M. Crozy claims is his finest variety to date. Very free flowering, producing a mass of bloom in immense sized spikes. Color pure red; a sturdy dwarf grower, 3 to 3½ feet high. \$2.00 per doz.

Sunbeams. Plant remarkably dwarf and compact, averaging about 2½ feet in height, flowers very large, color bright golden yellow, very faintly marked orange. \$8.00 per 100.

Octave Mirbeau. Flower large, with broad petals. Color deep scarlet, marbled with orange and crimson. A strong, free grower. \$8.00 per 100.

Admiral Avellan. One of the best of the dark leaved varieties, and a decided advancement in this section. The flowers are of good size, with heavy, strong petals which open out evenly, forming a clean pretty flower. Color rich orange scarlet, overlaid with salmon, giving the whole flower a rich luminous appearance. \$8.00 per 100.

Alsace. In this variety we have the nearest approach to a pure white Canna. A wonderfully free bloomer and a fine, erect grower, making nice shapely plants, about four feet high. The flowers at first opening are a light sulphur yellow, changing to creamy white. \$2.00 per doz.



Collection of 12 Choice Standard Varieties.

Alphonse Bouvier. A very luxuriant grower, in good ground, with good cultivation, growing six to seven feet high. It begins to bloom very early, and is one continuous mass of crimson the entire season. \$4.00 per 100.

Florence Vaughan. Flowers very large, of most perfect form, with broad overlapping petals, nicely rounded at the ends. Color brilliant yellow, spotted with bright red. A strong, robust grower, and flowers very freely. \$7.00 per 100.

Madam Crozy. Flowers of a dazzling crimson scarlet, bordered with golden yellow; a marvelous and rich combination of colors. The plant is of vigorous growth, yet very dwarf in habit, rarely exceeding four feet in height; one of the best for all purposes. \$3.00 per 100.

Charles Henderson. A splendid compact, dwarf grower, throwing up erect, compact heads of bloom of large size; the individual flowers are among the very largest. Color bright crimson; this is one of the very handsomest varieties, and where a mass of bright crimson is wanted we know of nothing better. \$3.00 per 100.

Columbia. Color a beautiful rich cardinal red. A splendid bedder, vigorous and free in growth, profuse and continuous in bloom. Habit extra good, short-jointed and compact. \$12.00 per 100.

Queen Charlotte. A splendid gilt-edged variety, and by many considered the finest of the class. The flowers, which are very large, with broad, rounded petals slightly recurved, are borne in immense heads, well above the foliage, and are most striking in color; a bright orange scarlet, deeply edged with bright canary yellow. \$6.00 per 100.

L. E. Bally. Flowers very large, with broad, heavy petals; color light canary yellow, spotted with orange. \$5.00 per 100.

Edward Mieg. A grand acquisition, and one of the best of the high colored varieties, bearing very large flowers in immense trusses of rich vermilion scarlet; a strong robust grower with dark green foliage. \$6.00 per 100.

Sophie Buchner. Flowers very large, in close compact trusses on stiff erect stems. Color deep crimson with vermilion shadings. Plant a sturdy compact grower, with broad, deep bronzy green foliage. \$4.00 per 100.

J. D. Cabos. Dark greenish maroon foliage, with a bronzy, metallic luster; flowers bright orange or apricot, sometimes brightened with a pinkish tinge. \$6.00 per 100.

President Carnot. Orange scarlet, slightly shaded pink. Good sized trusses of large flowers, foliage deep chocolate maroon, one of the best of the dark leaved sorts, distinct and fine. \$6.00 per 100.

Eldorado. The nearest approach to a pure golden yellow to date, being but very finely speckled with light red, which is noticeable only upon close examination. Spikes of bloom very compact. Petals broad, forming fine open flowers that do not fade, but drop from the spikes as soon as they pass perfection, leaving it always clean and bright. \$8.00 per 100.

LARGE FLOWERED CANNAS.

GENERAL COLLECTION.

- | | |
|--------------------------|-----------------------------|
| Antoine Chantin. | Geoffrey St. Hillaire. |
| Comte H. de Choiseul. | Paul Marquant, \$4 per 100. |
| Col. Dodds, \$4 per 100. | Progression. |
| Camille de Bernardin. | Paul Sigrist. |
| Duchess de Mortemart. | Souv. de Asa Gray. |
| Francois Crozy. | Victor Hugo. |
| Felix Crouse. | |

Unless noted, \$3.00 per 100.

FOLIAGE CANNAS.

Marechal Valliant, Gigantea Discolor &c. Dormant roots \$2.00 per 100.

NEW CARNATIONS FOR 1896.

The descriptions are those given by the originator.

Flora Hill. (Hill and Co.) Received N. Carnation S. certificate, February, 1896. The grandest white variety to date, and destined to be found in every green-house, because of its easy management. The flower is of enormous size, and rounded build; wonderfully free in bloom, stems not as stiff as those of Jubilee or Amazinda, but strong enough to support the blooms nicely, and keeps on stiffening as the season advances; good calyx; not subject to rust. Without exaggeration we can claim this as the most prolific bloomer in the carnation family. \$12.00 per 100.

Mrs. McBurney. (Hill and Co.) Also awarded N. C. S. certificate, February, 1896. Another enormous flowered variety, of clear salmon; bloom Camellia-shaped; petals thick and wax-like; color, clear salmon; very strong calyx, stem perfectly erect; height, 2 to 2½ feet. We have never seen a spot of rust on it. Free in bloom, and one of the most distinct; a queen among pink Carnations. \$12.00 per 100.

Mrs. Chas. H. Dohme. (Dorner). Color lively delicate pink, large flower, fragrant, with good calyx on strong, stiff stem. Plant vigorous, erect grower, a very early, free and constant bloomer. Much more so than any of the light pink varieties, rivaling in productiveness with Scott. This promises to be the best of the light pink commercial varieties. Certificate at Indianapolis and Philadelphia. \$10.00 per 100.

Mrs. Geo. M. Bradt. (Dorner). Color, clear white, heavily edged and striped with bright scarlet, giving it a very bright and cheerful appearance. Flowers large and full, with center petals standing erect, giving the bloom a well rounded form. Calyx resembling Mme. Albertini. Habit strong and vigorous. This variety is now in its fourth year, and has proven the most even and constant bloomer from early to late. Received gold medal at Atlanta, certificate at same place and at Chicago. \$10.00 per 100.

Mayor Pingree. (Breitmeyer). Clear lemon yellow, lightly marked with pink and occasionally splashed with white. A strong, robust grower and continuous bloomer, and not a cropper. Blooms measure 2½ to 3 inches in diameter. Stems very stiff and from 18 to 20 inches long as the season advances. An excellent keeper and very productive. Certified by A. C. S. \$2.50 per doz.; \$10.00 per 100.

Victor. This is a sport from Day-break and has been thoroughly tested for the past three years. In color it is bright salmon pink and improves under artificial light. A strong free-grower, flowers large, with strong stems. A fine keeper. \$10.00 per 100.

CYPERUS ALTERNIFOLIUS.

(Umbrella Plant.)

\$5.00 per 100.

CARYOPTERIS MASTOCANTHUS.

(Blue Spirea.)

A handsome, half-hardy, perennial plant from China. It is of a vigorous growth, producing flowers in great profusion the whole length of its branches; even young plants in small pots flowering freely. The color is a rich lavender or sky blue. A valuable plant either for bedding or pot culture, blooming continuously from mid-summer until cut by frost in the fall. Strong plants from open ground, \$6.00 per 100.



CALADIUM ESCULENTUM.

Fine sound bulbs, with good centers:

	Per 100
1st size, 7½ to 10 in. circumference.....	\$5 00
2d size, 6 to 7½ in. circumference.....	3 00
3d size, 5 to 6 in. circumference.....	2 00

COLEUS.

12 best market varieties, \$3.00 per 100.

SET OF 12 NEWER VARIETIES.

Selected from a long list of last year's introduction. The set of 12 for 75c.

CROTONS.

Eight varieties in good assortment.

2 in. pots, \$4.00 per 100. 3 in. pots, \$6.00 per 100.

CLEMATIS—LARGE FLOWERED.

Duchess of Edinburgh, double white.
 Gipsy Queen, rich dark velvety purple.
 Fairy Queen, pale flesh.
 Henryi, creamy white, very large.
 Jackmanii, dark velvety purple.
 Jackmanii Alba, white.
 Lady C. Neville, delicate blush white.
 Mad, Baron Veillard, light rose with lilac shadings.
 Ramona, lavender.
 Kermesina, bright wine-red.
 Strong 2-year-old plants, \$25.00 per 100. Extra
 strong 3-year, \$32.00 per 100.

CLEMATIS PANICULATA.

A strong, vigorous grower, remarkably free flowering; pure white; very fragrant. Strong 2-year plants, field grown, \$8.00 per 100.

CLEMATIS COCCINEA.

Strong, selected, 1 year plants. \$8.00 per 100.

DORONICUM PLANTAGINEUM.

One of the earliest Spring flowering hardy herbaceous plants. Flowers bright golden yellow, two to three inches across, borne in the greatest profusion. \$6.00 per 100.

DRACENA INDIVISA.

	Per doz.
Strong 6-inch pot plants.....	\$5 00
Strong 5-inch pot plants.....	3 50
Strong 4-inch pot plants.....	2 50

DICTAMNUS FRAXINELLA.

(Gas Plant.)

A showy hardy border plant, forming a bush about two and one-half feet in height, having fragrant foliage and curious-shaped red and white flowers. \$5.00 per 100.

DAHLIAS.

Choice assortment; whole roots, \$10.00 per 100.
 Pot plants after May 1st, \$5.00 per 100.

EPIPHYLLUM MAKOYANNA.

A beautiful variety of the Crab or Lobster Claw Cactus, with bright scarlet flowers of large size, and unusually bright and showy. Strong grafted plants with straight stems 12 to 15 inches high, making fine drooping specimens. 35c. each, \$3.50 per doz.

EULALIAS.

Zebrina. Strong clumps. \$6.00 per 100.
Variiegata. Strong clumps. \$6.00 per 100.
Gracillis Univitata, Strong clumps. \$6.00 per 100.

FUCHSIAS.

In good assortment, double and single, \$3.00 per 100.

FICUS ELASTICA.

4-inch pots, 8 to 10 inches high. \$25.00 per 100.

GLOXINIA.

Fine large tubers of an extra choice strain, \$4.00 per 100.

GAILLARDIA GRANDIFLORA.

One of the finest of hardy perennials. Flowers large, very numerous, produced on long stems; excellent for cutting, and of the most gorgeous coloring. It delights in a rather light, poor soil, and is in constant bloom from June to November. \$5.00 per 100.

GENISTA RACEMOSA.

A beautiful yellow flowering shrub, flowering so freely as to literally cover the plant with its rich golden yellow flowers when well grown. A very popular plant for Easter decorations. 3-inch pot plants, \$1.00 per doz.; 4-inch pots, \$1.50 per doz.; 5-inch pots, \$2.00 per doz.; 2-inch pots, \$3.00 per 100.

GERANIUMS.

NOVELTIES AND VARIETIES WORTHY OF SPECIAL NOTE.

Bruant Type.

H. Dauthey. Plant of low, free branching habit and wonderfully free in bloom. Trusses of immense size, composed of very large, fine round flowers, color coppery orange red, with white eye, with peculiar shadings around the eye; a magnificent color. The foliage is beautifully zoned; single flowered. \$2.00 per doz.

J. D. Cabos. Soft rosy pink, a new color in this class. Plant of dwarf growth, very free flowering, truss and flowers of largest size. A grand bedding pink. \$2.00 per doz.

Alphonse Ricard. The plant is a strong vigorous grower, branching and compact in habit; producing flowers in great masses; color a brilliant shade of orange red. Both floret and truss are of enormous size, semi-double. An excellent bedding sort. \$1.50 per doz.

President Victor Dubois. Immense trusses of extra-large semi-double flowers on long stout foot stalks. Color a bright magenta rose. Very distinct. \$1.50 per doz.

Baron de Scalibert. A neat dwarf, compact grower. Exceptionally free in bloom, so much so that the large trusses of bloom almost hide the foliage. Florets large, of a bright soft pink color with white center; petals slightly veined red. \$1.00 per doz.

Single Varieties.

Mad. Bruant. No other geranium on our grounds has ever attracted so much attention or been so much admired as this beautiful new Aureole flowered variety. It is entirely distinct from any Geranium. The plant is a vigorous grower, making nice, compact plants, and very free flowering, producing fine, large trusses of blooms in great profusion, individual flowers large, of fine shape, center of flowers white veined with carmine lake, the five petals regularly and distinctly bordered with bright solferino. The arrangement of color is exquisite, and entirely new in Geraniums. An excellent variety for pot culture, being a continuous bloomer winter and summer. See cut first page. \$12.00 per 100.

L'Aube. A grand new white bedding variety, with enormous trusses of large round flowers of good substance that do not burn in our hottest suns; color pure snow white. In habit of growth and freedom of bloom it is not surpassed by any of our best bedders of any color. \$2.00 per doz.

Van Beneden. Fine large flowers, lower petals rich violet, bordered with scarlet, upper petals orange scarlet, very bright and distinct. \$1.50 per doz.

Granville. The finest of all single pinks for bedding purposes. Plant is of good, strong habit, and a prolific bloomer, throwing the flowers well above the foliage; forms a mass of soft clear pink. \$1.00 per doz.

Double Varieties.

Francis Perkins. This we consider the finest bright pink bedding geranium to date for our climate. It is a decided improvement on that popular variety Emile de Girardin, being a much brighter, clearer color. The plant is a strong, vigorous grower, and a prolific bloomer; flowers are perfect in form, and are borne well above the foliage on long foot stalks; color a clear bright pink. It stands the sun admirably, and for massing there is nothing that equals it in color. \$10.00 per 100.

Countesse de Castries. Bright soft rose, base of petals marked white. Flowers in enormous trusses on long, stout foot stalks, individual flowers of very large size, with elegant undulated petals. Plant a robust grower. \$1.50 per doz.

Marquis de Galard. Trusses of immense size; color rosy-cerise shading to orange, a very striking color, and quite new. Plant of close, compact habit, almost a perpetual bloomer. A grand bedder. \$1.50 per doz.

Mad. Bacot. Dwarf, free grower and abundant bloomer. Color a remarkable shade of orange approaching yellow; very fine. \$1.50 per doz.

E. Dauglad. Plant robust and very free flowering, large, spherical trusses, carried well above the foliage; flowers large, color rosy scarlet, upper petals shaded orange at the base. \$1.50 per doz.

GERANIUMS—GENERAL COLLECTION.

(BRUANT TYPE.)

- | | |
|--------------------------------|------------------------------|
| Alfred Tennyson, \$5 per 100. | J. J. Harrison, \$6 per 100. |
| A. Gervalis. | Mrs. E. G. Hill. |
| Beaute Poitevine, \$5 per 100. | M. G. Meynot. |
| Chaplin. | Mrs. A. Blanc. |
| E. Legouve. | Mad. du Luc. |
| Gen. Dodds, \$5 per 100. | M. P. Olombel. |
| Glorie Poitevine \$5 per 100. | Mad. Chas. Molin. |
| Heteranthe, \$3 per 100. | Prof. Peuch. |
| Hector, \$6 per 100. | Van Dael, \$5 per 100. |
| | W. P. Simmons, \$6 per 100. |

Unless noted \$4.00 per 100.

GENERAL COLLECTION.

DOUBLE FLOWERED.

- | | |
|------------------------|----------------------------|
| B. K. Bliss. | Chas. Jolly. |
| Chas. Rabutot. | Dr. Marsch. |
| Centaur. | Double Guinea \$6 per 100. |
| Colossus, \$6 per 100. | |



FRANCIS PERKINS.

- | | |
|------------------------------|--|
| Fleur de Neige. | Montesque. |
| Glory de France. | Mad. Debouche. |
| Gringoire. | Mad. Barney. |
| G. Caillebotte, \$6 per 100. | Mons. de la Rue, \$6 per 100 |
| James Vick. | Mme. Ayme Chevreliere. |
| LeCid. | M. Remy Martin. |
| Lord Tennyson. | Mad. Philippe Labrie, \$6 per 100. |
| Lord Lytton. | Mad. Chambrie, \$6 per 100. |
| LaFavorite. | Sir Trevor Lawrence. |
| Mad. Jouis. | S. A. Nutt. |
| Mary Hill. | Viscountesse de Pavilion, \$6 per 100. |
| Mad. de la Rue. | |
| Marvel. | |

SINGLE FLOWERED.

- | | |
|---------------------------|------------------------------|
| Athlete, \$5 per 100. | M. Alfred Carriere. |
| Carmen Sylva. | Mad. Heine. |
| Dr. Levavasseur. | Marguerite de Layers. |
| Ensign. | Mad. Sampson. |
| Erasme Simonnot. | Octave Mirbeau, \$6 per 100. |
| Fred Becker, \$6 per 100. | Queen of the West. |
| Gen. Grant. | Souv de Mirande. |
| John Salter. | A. Lavallee. |
| L. Swartling. | |
| Mrs. J. M. Garr. | |
- Unless noted, \$4 per 100. Our choice of varieties \$3.00 per 100, \$25.00 per 1000.

IVY GERANIUMS.

Camille Flammarion, Eden Marchi, Henry Litoff, Jeanne de Arc, P. Crozy, Souv. Chas. Turner, August Hardy and Chas. Monselet, \$4.00 per 100.

GERANIUMS.

- Silver Leaved, Bronzed and Variegated.
- | |
|-----------------------------------|
| Mountain of Snow, \$3.00 per 100. |
| Mad. Salleroi, \$3.00 per 100. |
| Happy Thought, \$4.00 per 100. |

GLADIOLI.

- Brenchleyensis*. Bright scarlet. \$1.00 per 100.
- Ceres*. Pure white, blotched with purplish rose. \$1.25 per 100.
- Eugene Scribe*. Rose blazed with crimson, \$4.00 per 100.
- Isaac Buchanan*. Fine yellow; one of the best. \$3.00 per 100.
- John Bull*. Ivory white tinged with yellow, \$2.00 per 100.
- Lemoinii*. Upper petals creamy white, lower ones spotted with deep crimson, bordered yellow. \$2.00 per 100.
- May*. Fine large flower, white edge of petals delicately touched with pink. \$1.50 per 100.
- Mad. Monneret*. Delicate rose with white stripe in each petal. \$1.50 per 100.
- Napoleon III*. Bright scarlet, center of petals striped white. \$1.50 per 100.

	Per 100	Per 1000
Finest Mixed, all colors	\$1 00	\$8 00
White and light varieties mixed.....	2 00	
Pink and striped " "	2 00	
Red " "	1 50	
Yellow " "	2 50	

HIBISCUS.

\$3.00 per 100.

HYDRANGEAS.

- Otaska Montrosa*. Intense rose color, trusses of monstrous size, \$8.00 per 100.
- Thos. Hogg*, White. \$4.00 per 100.
- Hortensia*. Rose color. \$3.00 per 100.
- Ramis Pictis*. (Red branched). Deep pink. \$4.00 per 100.
- Otaska*. Bright rosy pink, \$4.00 per 100.
- Paniculata Grandiflora*. 6 to 8 inches high. \$3.00 per 100; 18 to 24 inches high, \$6.00 per 100.
- Hortensia and Ramis Pictis*. Strong plants from open ground, suitable for 7 and 8 inch pots, \$15.00 per 100.
- Hortensia and Ramis Pictis*. Strong plants from open ground suitable for 5 and 6 inch pots, \$12.00 per 100.

HEMEROCALLIS.

- Dumortieri*. A variety growing very dwarf and compact, and producing an endless number of large, lily-like blossoms of a bright orange color. \$6.00 per 100.
- Kwamso, fl. pl.* Large, double, copper-colored flowers; in bloom all summer. An excellent plant for the hardy border. \$8.00 per 100.

HELIANTHUS.

- Soleil d'Or*. A valuable new variety with fine shaped flowers, three inches and over in diameter, that resemble a Cactus Dahlia in shape and finish; the plant is compact in growth, and is literally covered with rich golden yellow flowers. \$6.00 per 100.
- Laetiflorus*. One of the most beautiful plants for the garden; the flowers are about four inches in diameter, of the richest golden yellow color. \$3.00 per 100.
- Multiflorus Plenus*. The flowers are from three to four inches in diameter, as double as any Double Dahlia, and cover the plant from the ground to the top. Color a bright golden yellow. \$3.00 per 100.

HOLLYHOCKS.

Strong roots in separate colors, white, pink, yellow and red. \$4.00 per 100.

HARDY HIBISCUS.

(Crimson Eye.)

Strong flowering roots. \$4.00 per 100.

IMPOMEA GRANDIFLORA.

(Moon Flower.)

\$4.00 per 100.

LILIUM.

Auratum, 7 to 9 inches in circumference, \$3.00 per 100.

Auratum, 9 to 11 inches in circumference, \$5.00 per 100.

Speciosum Rubrum. \$6.00 per 100.

Speciosum Album. \$7.00 per 100.

MEXICAN PRIMROSE.

Very free flowering; fine for baskets. \$3.00 per 100.

OTAHEITE ORANGE.

We offer a fine stock of this valuable variety for pot culture. 2½ inch pots, 6 to 8 inches high, \$5.00 per 100. 4-inch pots, fine bushy plants, \$3.50 per doz.



PLATYCODON GRANDIFLORUM.

PLATYCODON GRANDIFLORUM.

(Chinese Bell-Flower.)

A valuable perennial, forming a dense branching bush of upright habit, with neat foliage, and from middle of July until late September bearing a constant succession of handsome, large bell-shaped, deep blue and white flowers. \$4.00 per 100.



PALMS.

Latania Borbonica.

2½-inch pots, \$5.00 per 100, \$45.00 per 1000.
 3-inch pots, \$8.00 per 100.
 4-inch pots, 3 to 4 leaves, showing character, \$25.00 per 100.
 5-inch pots, 4 to 5 leaves, showing character, \$50.00 per 100.



KENTIA BALMOREANA.

Kentia Balmoreana.

2½-inch pots, per 100.....\$15 00
 6-inch pots, 20 to 24 inches high, per doz.....12 00
 6-inch pots, 24 to 30 inches high, per doz.... 18 00

Cycas Revoluta.

With 14 to 18 leaves.....each, \$4 00
 With 18 to 20 leaves.....each, 5 00

Kentia Fosteriana.

2½-inch pots, per 100.....\$12 00
 6-inch pots, 24 to 30 inches high, per doz.... 12 00
 6-inch pots, 30 to 36 inches high, per doz.... 15 00
 7-inch pots, 36 to 40 inches high, per doz.... 18 00

Areca Lutescens.

2½-inch pots, per 100.....\$6 00
 Per doz.
 4-inch pots (3 plants in a pot) 15 inches high..\$4 00
 4-inch pots, single plant, 15 inches high..... 3 00
 6-inch pots, three plants in a pot..... 9 00
 7-inch pots, three plants in a pot..... 15 00



COCOS WEDDELLIANA

Cocos Weddelliana.

3-inch pots, 10 to 12 inches high, per 100.....\$25 00

Phoenix Reclinata.

2½-inch pots, per 100.....\$8 00
 3-inch pots, per doz..... 2 00

PANDANUS UTILIS.

3-inch pots, \$1.50 per doz.

PANCRATIUM CARIBBAEUM.

(Spider Lily.)

Flowering bulbs(\$5.00 per 100.

PHILOX—HARDY.

A choice assortment, selected from the finest European collections. \$5.00 per 100.

PELARGONIUMS.

Mrs. Robert Sandiford. A grand pure white sort; the flowers are very large, with finely ruffled edges, giving the whole flower the appearance of being double; a free bloomer. An excellent variety for cut-flower use. \$1.50 per doz.

Mad. Gustave Henry. A most distinct and handsome new variety with large rosy carmine flowers with white center and deep purple blotch, neat compact habit. \$2.00 per doz.

Mad. Vibert. A splendid flower with black maroon blotches bordered fiery red, the entire flower edged with rose. A vigorous grower of fine habit and a free bloomer. \$1.50 per doz.

NEW DOUBLE RUDBEKIA.

(Golden Glow.)

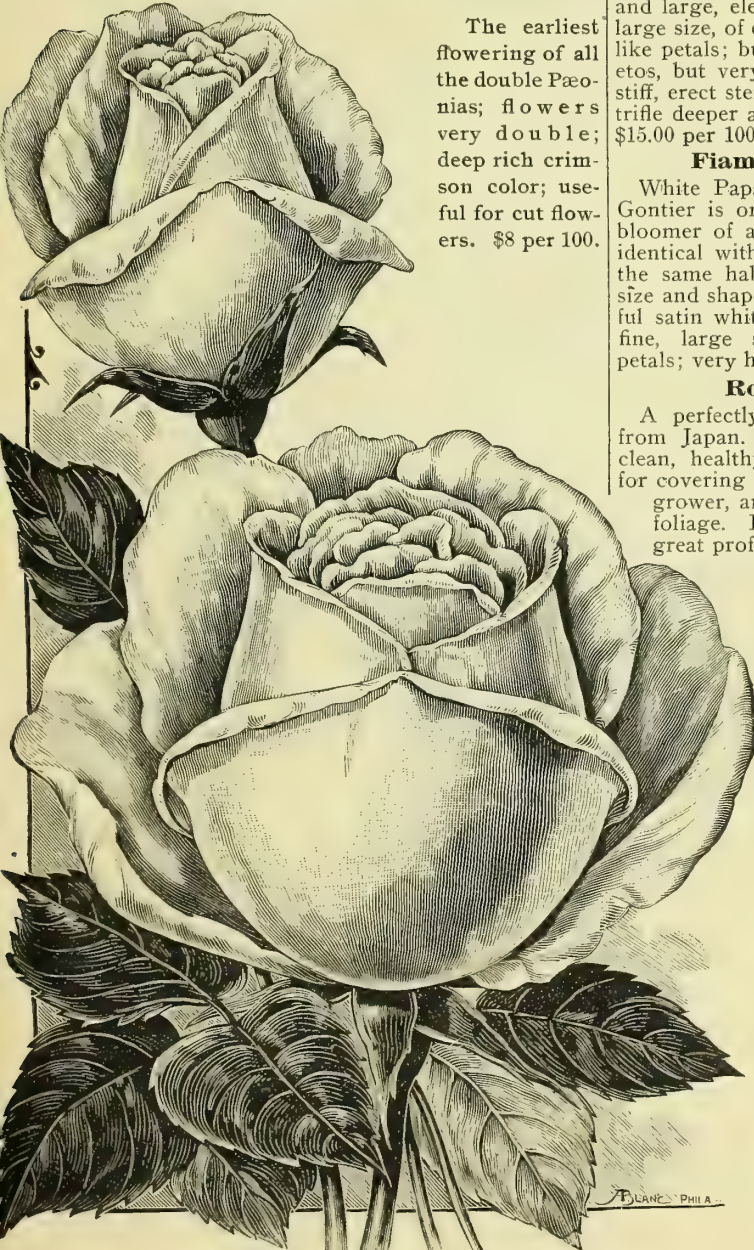
One of the most distinct and beautiful large growing hardy perennials that has been introduced in years, and one that should find a place in every garden. The plant is a strong grower, of fine branching habit, bearing by the hundred, on long graceful stems, beautiful double blossoms of the brightest golden yellow, and as large as a Cactus Dahlia. Excellent for cut flowers, lasting well when cut. \$5.00 per 100.

PAEONIAS, HERBACEOUS.

We offer an excellent assortment of these beautiful hardy plants, in twelve choice varieties, named, \$10.00 per 100.

PAEONIA OFFICINALIS RUBRA PLENA.

The earliest flowering of all the double Paeonias; flowers very double; deep rich crimson color; useful for cut flowers. \$8 per 100.



SOUV. PRESIDENT CARNOT.

ROSES.

NEW, AND SCARCE VARIETIES.

Mlle. Helena Cambier.—(Hybrid Tea.)

This is a decided advance towards a true yellow Hybrid Tea. The color at first is a salmon rose, varying to yellow at base of petals, changing to rosy flesh with deeper center in the open flowers. The plant is a robust, bushy grower with erect stems and beautiful bronzy green foliage, a prolific bloomer. Flowers large, very double, with full high centers. \$20.00 per 100.

Souv. President Carnot.—(Hybrid Tea.)

A charming new French rose; one of the most promising new roses we have had the pleasure of offering in years, and we predict for it a grand future with the cut-flower growers. A strong, clean healthy grower, with handsome, bronzy green foliage and large, elegantly shaped buds. The flower is of large size, of exquisite shape with heavy, thick, shell-like petals; buds long and pointed, similar to Niphetos, but very much larger, and all borne on long, stiff, erect stems. Color delicate rosy flesh shaded a trifle deeper at the center. A very profuse bloomer. \$15.00 per 100.

Fiammetta Labonnand.—(Tea.)

White Papa Gontier. It is conceded by all that Gontier is one of the finest and the most profuse bloomer of all red Tea Roses; this new variety is identical with it in every way except color; it has the same habit of growth, freedom of bloom and size and shape of flowers, which in this are a beautiful satin white delicately tinted with light rose. A fine, large sized flower, with elegant shell-like petals; very handsome buds. \$10.00 per 100.

Rosa Multiflora Japonica.

A perfectly hardy, free-flowering climbing rose from Japan. A remarkably strong grower, with clean, healthy foliage. It is an excellent variety for covering arbors or porches, as it is a very rapid grower, and soon makes a large plant with dense foliage. Its pure white flowers are produced in great profusion, in large clusters that almost hide the foliage. Strong 2½x3-inch pot plants, \$12.00 per 100.

Climbing Meteor.

This variety originated in a sport from the well known forcing Rose Meteor, with which it is identical in every way except habit of growth. Climbing Meteor is a strong free growing climbing Rose that under favorable conditions will make shoots 12 to 15 feet in a single season, very free flowering, producing all through the growing season its rich dark velvety crimson flowers, perfectly double and in size and finish equal to the best Hybrid Perpetuals. \$10.00 per 100.

Clio, H. P.

This is a grand addition to our list of white or blush, hardy garden roses. The flower is simply perfection in form, with fine broad petals, with high, full center, and is magnificent in all its stages of growth. Color, delicate satin blush, with a light shading of rosy pink at the center. Plant a strong, vigorous grower, with large, handsome foliage. \$10.00 per 100.

Yellow Rambler.—(Aglaia.)

A new hardy yellow climbing rose, blooming after same manner as Crimson Rambler in large clusters; flowers of medium size in immense clusters; often 35 to 40 flowers in a single cluster; very sweet scented. Color a clear decided yellow, a color heretofore unknown in a climbing rose that was in any way hardy. Yellow Rambler has successfully withstood unprotected, a continued temperature of from zero to two degrees below, proving it to be the hardiest of all yellow climbing roses. It is a rampant grower, well established plant, often making a growth of ten to twelve feet in a single season. The flowers are very lasting, keeping in perfect condition three to four weeks without fading. \$2.00 per doz., \$15.00 per 100.



FORCING ROSES.

- Bridesmaid.
- Catherine Mermet.
- Golden Gate.
- Kaiserin, Augusta Victoria, \$4 per 100.
- La France, \$4 per 100.
- Meteor.
- Mad. de Watteville.
- Niphetos, \$4 per 100.
- Papa Gontier.
- Perle des Jardins, \$4 per 100.
- Sunset, \$4 per 100.
- Senator McNaughton, \$4 per 100.
- The Bride.

Unless noted, \$3.00 per 100.

GENERAL COLLECTION EVER-BLOOMING ROSES.

- Antoine Verdier.
- Augustine Halem, \$4 per 100.
- Alfred Aubert.
- Agripina.
- Baron Berge.
- Bon Silene.
- Beauty of Stapleford, \$4 per 100.
- Bertha Clavel, \$4 per 100.
- Beaute Inconstant, \$6 per 100.
- Countess de Breteuil.
- Crown Princess Victoria, \$4 per 100.
- Climbing Malmaison.
- Cornelia Cook.
- Chromatella, \$4 per 100.
- Dr. Grill.
- Duchess de Brabant.
- Duchess of Albany, \$4 per 100.
- Duke of York, \$5 per 100.
- Ernest Metz.

- Elsie Heyman.
- Etirole de Lyon.
- Francois Dubreuil, \$5 per 100.
- Gen. Robt. E. Lee, \$5 per 100.
- Hermosa.
- James Sprunt.
- J. B. Varrone.
- La Marque.
- La Princess Vera.
- La Phoenix.
- Luciole.
- Mary Washington.
- Mrs. DeGraw, \$4 per 100.
- Mad. Martha du Bourg.
- M. Niel, \$4 per 100.
- Mad. Elie Lambard.
- Mad. de Vatry.

YELLOW RAMBLER—(AGLAIA.)

- Mad. Schwaller, \$4 per 100.
- Mrs. J. Wilson.
- Mad. Etienne.
- Mad. Alfred Carrier, \$4 per 100.
- Marquis de Vivans.
- Mad. E. Resal.
- Marie Van Houtte.
- Mad. Welche.
- Maman Cochet.
- Marie Guillot.
- Mad. Pierre Guillot, \$4 per 100.
- Mrs. Paul, \$4 per 100.
- Mad. E. Helfenbein.
- Mad. Joseph Schwartz.
- Mad. Angele Jacquir.
- Mad. Lambard.
- Mad. F. Kruger.
- Marion Dingee, \$4 per 100.
- Mad. Scipion Cochet.
- Queen's Scarlet.
- Reine Marie Henriette.
- Rainbow.
- Souv. de Malmaison, \$4 per 100.
- Souv. de Laurent Guillot, \$5 per 100.
- Souv. de Un Ami.
- Solfaterre.
- Safrano.
- Susanne Blanchet.
- Sapho.
- Snowflake.
- The Queen.
- Wm. Allen Richardson.

Unless noted, purchaser's selection, \$3.50 per 100; \$30.00 per 1000. Our selection \$3.00 per 100; \$25.00 per 1000.

POLYANTHA ROSES.

Clotilde Soupert. The most vigorous grower and prolific in bloom of any of the Polyantha class. Flowers large, very full, and finely imbricated.

Pink Soupert. Bright pink, full, double flower, same size as Soupert. \$4.00 per 100.

George Pernet. Flora.
 Glorie des Polyanthus. Mignonette.
 Jean Drivon. Mad. Cecil Brunner.
 Parquette.

Unless noted, \$3.50 per 100.

HYBRID PERPETUAL ROSES.

In good assortment, \$5.00 per 100.

HARDY CLIMBING ROSES.

Crimson Rambler.

A grand, hardy climbing rose, with immense trusses of bright crimson flowers. \$4.00 per 100.

Balt. Belle, Prairie Queen, Seven Sisters and Tennessee Belle, \$4.00 per 100.

Rosa Wichuriana.—(Japan Creeping Rose.)

\$3.50 per 100. \$30.00 per 1000.

STRONG FIELD GROWN BUDDED ROSES.

(HYBRID PERPETUALS.)

Alfred Colomb.	M. P. Wilder.
Anna de Dresbach.	Magna Charta.
Baroness Rothschilds.	Marchioness of Londonderry, \$20 per 100.
Coquette des Blancs.	100.
Coquette des Alps.	Mad. G. Luizet.
Clio, \$12 per 100.	Mrs. J. H. Laing.
Francois Levat.	Paul Neyron.
Gen. Jacqueminot.	Prince C. de Rohan.
Gen. Washington.	Silver Queen.
John Hopper.	Ulrich Brunner.
Lady Arthur Hill.	Vick's Caprice.

Unless noted, \$9.00 per 100; \$80.00 per 1000.

MOSS ROSES.

Blanche Moreau.	John Cranston.
Capt. John Ingraham.	Luxemburg.
Crested.	Perpetual White.
Crimson Globe.	Princess Adelaide.
Henry Martin.	Salet.
Glory of Mosses.	

\$9.00 per 100.

HARDY CLIMBING ROSES.

Strong two-year-old own roots plants, Balt. Belle, Anna Marie, Seven Sisters, Tennessee Belle and Prairie Queen: \$6.00 per 100.

Crimson Rambler.

Extra strong two year, per 100.....\$20.00
 Strong one year, per 100..... 15.00

Rosa Wichuriana.

Japanese Creeping Rose. \$8.00 per 100.

Hybrid Rugosa.—(Mad. George Bruant.)

An almost perpetual, flowering white rose, excellent for cemetery or park planting. \$10.00 per 100.

Mad. Plantier.

\$7.00 per 100.

Tree Roses.

Four to five feet high, with good tops. \$50.00 per 100.



RICHARDIA ALBA MACULATA.

(Spotted Calla.)

Extra strong bulbs. \$4.00 per 100.

STROBILANTHES DYERIANUS.

A beautiful foliage plant of exquisite coloring, surpassing even the Coleus or Begonia in this respect. It forms a compact bush eighteen inches high, with leaves six to nine inches long and three to four inches wide; of intense metallic color, shading into light rose, with a light green margin. \$4.00 per 100.

SWAINSONIA GALEGIFOLIA ALBA.

A most desirable ever-blooming plant, with pure white flowers. Useful as a cut bloom for local or home trade. \$4.00 per 100.

TUBEROSES.

Pearle and Tall Double. 4 inches and up in circumference. \$1.00 per 100; \$7.50 per 1,000.

TRITOMA UVARIA.

Extra strong roots. \$4.00 per 100.

VIOLETS.

The California. Very large, single flower on long stems. Deep purple. \$3.00 per 100.

Marie Louise. White center. \$3.00 per 100.

Lady Campbell. \$3.00 per 100.

SANSEVERIA ZEALANICA.

A beautiful plant, splendidly adapted for the decoration of drawing rooms and halls, as it stands draught and dust with impunity. \$3.00 per 100.

CONDENSED LIST OF FLORISTS' STOCK.

Achania Malvaviscus. \$3.00 per 100.

Ageratums. In 3 varieties. \$3.00 per 100.

Achyranthes. In 4 varieties. \$3.00 per 100.

Anthericum Variegatum. \$3.00 per 100.

Aloysia Citriodora. (Lemon Verbena). \$4.00 per 100.

Cinnamon Vine. Strong roots. \$3.00 per 100.

- Clerodendron Balfouri. \$4.00 per 100.
- Cuphea Platycentra. \$3.00 per 100.
- Coreopsis Lanceolata. \$5.00 per 100.
- Coba Scandens. \$5.00 per 100.
- Eranthemum Pulchellum. \$4.00 per 100.
- German Ivy. \$3.00 per 100.
- Hyacinthus Candicans. \$2.00 per 100.
- Jasminum Grandiflorum. \$5.00 per 100.
- Madeira Vine. \$2.00 per 100.
- Oxalis Ortgesii. \$4.00 per 100.
- Pinks, Hardy Garden. \$3.00 per 100.
- Peperomia Resedaeflora. \$3.00 per 100.
- Pomegranates, Legrella, Alba Plena and Punica Nana. \$5.00 per 100.
- Passion Vines. In two varieties. \$4.00 per 100.
- Plumbago Capensis and Alba. \$4.00 per 100.
- Russella Juncea. \$3.00 per 100.
- Salvia Splendens. \$3.00 per 100.
- Stevia Serrata. \$4.00 per 100.
- Solanum Jasminoides Grandiflora. \$4.00 per 100.
- Tradescantia. Two varieties. \$3.00 per 100.
- Vinca Variegata. \$3.00 per 100.

RHODODENDRONS.

Strong bushy plants, with clean, bright foliage; well set with flower buds.
 Choice named sorts, 18 to 20 inches high, \$65.00 per 100. 20 to 24 inches high, \$85.00 per 100.

HARDY SHRUBS SUITABLE FOR MAILING.

- Altheas. In 4 best varieties. \$4.00 per 100.
- Berberry, Purple Leaved. \$3.00 per 100.
- Deutzia Gracilis. \$3.00 per 100.
- Calycanthus. \$2.50 per 100.
- Deutzias. In 3 best varieties. \$2.00 per 100.
- Eleagnus Longipes. \$4.00 per 100.
- Honeysuckle. In variety. \$3.00 per 100.
- Hydrangea Paniculata. \$3.00 per 100.
- Lilac. White and purple. \$3.00 per 100.
- Lilac, Persian. \$5.00 per 100.
- Purple Fringe. \$3.00 per 100.
- Pyrus Japonica. \$2.50 per 100.
- Philadelphus Aurea. \$4.00 per 100.
- Spirea Bumaldi. \$4.00 per 100.
- Spirea. In variety. \$3.00 per 100.
- Snowball. \$2.50 per 100.
- Wiegela. In variety. \$3.00 per 100.
- Wisteria, Purple. \$4.00 per 100.

HARDY SHRUBS AND VINES.

- Altheas. Double in variety, 3 feet. \$12.00 per 100.
- Azalea Mollis. Fine, bushy plants, well set with buds; unnamed. \$30.00 per 100.
- Azalea Ghent. Fine named sorts. \$50.00 per 100.
- Ampelopsis Veitchii. Strong, from 4 to 5 inch pots, 3 to 4 feet tops. \$8.00 per 100.
- Aristolochio Sippo. Extra strong, 5 to 6 feet tops. \$20.00 per 100.
- Berberry. Green and purple leaved, 2 to 3 feet, \$8.00 per 100.
- Cydonia Japonica. 18 to 24 inches. \$6.00 per 100.
- Calycanthus. 18 to 24 inches. \$8.00 per 100.
- Deutzias. In three varieties; 3 to 4 feet. \$8.00 per 100.
- Deutzia Gracilis. Fine forcing stock, 10 to 12 inches high; suitable for 4 to 5 inch pots. \$5.00 per 100.
- Deutzia Gracilis. 15 inches and over; suitable for 6 and 7 inch pots. \$8.00 per 100.
- Fringe Purple. 3 to 4 feet. \$10.00 per 100.
- Honeysuckle Tartartian. Red and white; 3 feet. \$8.00 per 100.
- Honeysuckle, Monthly Fragrant, Halleana, Scarlet Trumpet and Aurea Reticulata. Strong plants, \$8.00 per 100.
- Hydrangea Paniculata Grandiflora. 18 to 24 inches. \$6.00 per 100.
- Hydrangea Paniculata Grandiflora. 2 to 2½ feet. \$8.00 per 100.
- Spireas. In variety; 2 to 3 feet. \$8.00 per 100.
- Snowball. 3 to 4 feet, \$12.00 per 100.
- Viburnum Plicatum. (Japan Snowball). 2 feet, \$15.00 per 100.
- Wiegelas. In variety; 3 to 4 feet. \$10.00 per 100.
- Wisteria, Purple. 2 years; strong. \$10.00 per 100.



ACHILLEA—PEARL
 See page 3.

A Select List of Tested Vegetable Seeds.

No Charge for Packing or Cartage. If sent by mail add postage at rate of 8c. per lb.; 15c. per qt. for Beans, Peas, etc.; 10c. per qt. for Sweet Corn.

	Oz.	¼ lb.	Lb.	Oz.	¼ Lb.	Lb.
ASPARAGUS, Columbian Mammoth White.....	\$0	15	\$0 45			
Conover's Colossal.....		10	20			
Palmetto		10	30			
BEEETS, Table Sorts, Eclipse.....		12	30			
Dewing's Improved.....		12	25			
Bastian Early Blood.....		12	25			
Edmund's Early.....			12			25
Egyptian			12			25
Long Dark Blood.....			12			25
Detroit Dark Red.....	\$0	5	15			35
Crosby's Egyptian.....		5	15			35
Swiss Chard or Sea Kale....			12			30

	Oz.	¼ Lb.	Lb.
BEETS, Sugar and Mangels—			
Lane's Sugar. 5 lbs. or more at 15c.....			20
Golden Tankard, 5 lbs. or more at 13c.....			15
Mammoth Long Red. 5 lbs. or more at 12c.....			15
Yellow Globe. 5 lbs. or more at 13c.....			15
BEANS, Dwarf or Bush, Wax Podded—	Qt.	Pk.	Bu.
Keeney's Rustless Golden Wax	20	1 00	3 50
Wardwell's Dwarf Kidney. .	20	90	3 00
Black Eyed Wax.....	20	90	3 00
Golden Wax.....	20	90	3 00
Prolific Black Wax.....	20	90	3 25
Golden Eyed Wax.....	20	90	3 00
Yosemite Mammoth Wax...	20	1 40
Green Podded Varieties—			
Early Mohawk.....	15	80	2 60
Improved Red Valentine....	15	80	2 60
White Prolific Tree.....	15	90	2 75
Burlingame Medium.....	15	90	2 75
White Marrowfat.....	15	80	2 50
Bush Limas—			
Burpee's Bush Lima.....	25	1 50	5 00
Henderson's Bush Lima....	20	1 25	4 50
Pole or Running—			
Large White Lima.....	20	1 25	4 50
King of the Garden Lima....	25	1 50
Old Homestead.....	25	1 25
Early Golden Cluster Wax...	25	1 35
CABBAGE, All-Head Early.....	Oz.	¼ lb.	Lb.
Early Jersey Wakefield (best American)	15	45	1 50
Large Jersey Wakefield or Charleston	15	45	1 50
Early Summer.....	10	40	1 25
Early York.....	10	25	80
Sure Head.....	10	40	1 25
Premium Flat Dutch.....	10	35	1 10
All Seasons.....	10	40	1 25
Marblehead Mammoth.....	10	35	1 10
Fottler's Improved Brunswick	10	40	1 25
Mammoth Rock Red.....	15	50	1 50
Winningstadt	10	35	1 00
American Drumhead Savoy..	15	45	1 50
Dutch Winter or Hollander..	20	60	2 00
CAULIFLOWER, Early Snowball	1 50	5 00
Extra Early Dwarf Erfurt..	1 50	5 00
Lenormand's Short Stemmed	45	1 50
Early Paris.....	50	1 60
CARROT, Early Half Long Scarlet....	15	40
Danver's Half Long.....	15	40
Chantenay	15	40
Ox Heart.....	15	40
Improved Long Orange.....	15	35
Large White Belgian.....	12	30
CELERY, White Plume.....	15	40	1 50
Golden Self-Blanching.....	20	65	2 50
Giant Pascal.....	10	25	90
Dwarf Golden Heart.....	10	35	1 00
New Rose.....	15	45	1 35
Boston Market.....	10	25	80
New Pink Plume.....	20	60
CUCUMBERS, Early Cluster....	12	30
Giant Pera.....	20	45
Improved Early White Spine	12	30
Extra Long White Spine....	12	30

	Oz.	¼ Lb.	Lb.
Nichol's Medium Green.....	15		30
Improved Long Green.....	15		35
Cool and Crisp.....	15		35
Green Prolific.....	12		30
Early Frame.....	15		35
Japanese Climbing.....	25		75
CORN, SWEET	Qt.	Pk.	Bu.
Cory.....	10	50	1 75
Stabler's Early.....	15	60	2 00
Nonesuch	15	60	2 00
Country Gentleman.....	15	60	2 00
Early Minnesota.....	10	50	1 75
Stowell's Evergreen.....	10	50	1 50
Mammoth Sugar.....	15	60	2 00
Egyptian	10	50	1 75
Ballard's Early.....	15	60	2 00
Kendel's Early Giant.....	25	1 20
Stabler's Pedigree.....	20	65	2 25
Zig Zag Evergreen.....	20	65	2 25
For Fodder.....	10	35	95
CORN, Field Varieties—			
White Cap Yellow Dent.....	35	1 10
Extra Early Huron Dent... ..	35	1 10
King of the Earlyies.....	35	1 10
Early Mastodon Dent.....	35	1 10
Golden Beauty.....	35	1 10
Hickory King.....	35	1 10
Pride of the North.....	35	1 10
Leaming	35	1 10
Iowa Gold Mine.....	35	1 10
Cuban Ensilage.....	30	1 00
EGG PLANT, Improved Large	Oz.	¼ lb.	Lb.
Purple	25	75	2 50
White Pearl.....	35	1 00
LETTUCE, Black Seeded Simpson	5	20	60
Grand Rapids Forcing.....	5	20	60
Denver Market.....	5	20	60
Salamander	10	25	70
The Deacon.....	5	20	60
New York.....	5	25	75
Simpson's Early Curled....	5	20	55
Hanson	5	20	60
Early Prize Head.....	5	20	55
MELON, MUSK			
Early Hackensack	5	15	35
Melrose	5	20	50
Banquet	5	15	40
Osage	5	15	35
Tip Top.....	5	15	45
Columbus	5	15	45
Emerald Gem.....	5	15	40
Princess	5	15	40
Miller's Cream.....	5	15	40
Hackensack	5	15	35
Champion Market.....	5	15	35
Netted Gem.....	5	15	40
MELON, WATER—			
Kolb's Gem.....	5	10	25
Dixie	5	15	30
Sweet Heart.....	5	15	35
Duke Jones.....	5	15	35
Florida Favorite.....	5	15	30
Phinney's Early.....	5	15	30
Cuban Queen.....	5	15	30
Mt. Sweet.....	5	15	30
Gypsy	5	15	35
Fordhook Early.....	5	15	35
Ice Cream.....	5	15	35
MUSHROOM SPAWN, best English Milltrack.....	10
ONION, Extra Selected Yellow			
Globe Danvers.....	20	50	1 50
Yellow Globe Danvers.....	10	20	60

	Oz.	¼ Lb.	Lb.		Oz.	¼ Lb.	Lb.
ONION, Southport White Globe	15	50	1 50	SPINACH, Round Leaved. 10 lbs.			
Large Red Wethersfield.....	10	25	70	or over @ 12c.....			15
Large Red Globe.....	10	30	85	Long Standing. 10 lbs. or			
Prize Taker.....	15	40	1 25	over @ 12c.....			15
White Silverskin.....	15	45	1 50	Prickley. 10 lbs. or over @			
Giant White Italian Tripoli..	10	35	1 00	12c.....			15
Giant Rocca.....	10	35	1 00	SQUASH, Golden Hubbard.....	15	35	1 20
Mammoth Silver King.....	15	40	1 25	White Summer Crookneck..	10	20	50
PEAS, Extra Early Sorts.	Qt.	Pk.	Bu.	SQUASH, Early White Bush...	5	15	35
Alaska.....	15	85	2 75	Giant Summer Crookneck..	5	15	35
First and Best.....	15	80	2 50	Golden Custard Bush.....	5	15	40
Extra Early Tom Thumb...	20	1 15	4 00	Faxon.....	5	15	40
Premium Gem.....	20	1 00	3 25	Perfect Gem.....	5	15	40
McLean's Little Gem.....	20	1 00	3 25	Boston Marrow.....	5	15	35
American Wonder.....	20	1 15	3 50	Hubbard.....	5	15	30
Nott's Excelsior.....	20	1 20	4 50	Sibley.....	5	15	35
Second Early Varieties—				Giant Summer Straightneck.	5	20	45
McLean's Advancer.....	15	85	2 60	Early Prolific Marrow.....	5	20	50
Hosford's Market Garden...	15	90	3 00	Essex Hybrid.....	5	15	35
Heroine.....	25	1 15	4 00	TOMATO, Atlantic Prize.....	15	50	1 50
For General Crop—				Favorite.....	15	40	1 25
Stratagem.....	25	1 25	4 00	Golden Queen.....	20	60	1 75
Telephone.....	20	1 15	3 75	Perfection.....	15	40	1 25
Champion of England.....	15	80	2 40	Buckeye State.....	20	60	1 75
Everbearing.....	15	85	2 75	Beauty.....	15	50	1 50
White Marrowfat.....	15	60	1 75	Acme.....	15	50	1 50
Canada Field.....	15	35	1 00	Dwarf Aristocrat.....	15	50	1 50
PARSNIP, Hollow Crown.....	Oz.	¼ lb.	Lb.	The Stone.....	15	50	1 50
Student.....	5	10	20	Ponderosa.....	30	90	3 00
PARSLEY, Double Curled.....	5	15	40	Dwarf Champion.....	15	50	1 50
Champion Moss Curled.....	5	15	40	TURNIP—White Fleshed Varieties—			
PEPPER, Ruby King.....	15	35	Purple Top White Globe....	5	15	25
Mammoth Golden Queen...	25	75	Early White Flat Dutch....	5	15	25
Large Bell.....	15	35	Early Purple Top, Strap			
Red Cayenne.....	15	Leaved.....	5	15	25
Celestial.....	15	White Egg.....	5	15	25
POTATOES, Carman No. 1.....	Pk.	Bu.	Bbl.	Early Snowball.....	5	15	25
Maggie Murphy.....	30	80	2 00	Yellow Fleshed Sorts—			
Early Ohio.....	25	75	1 75	Yellow Aberdeen.....	5	15	20
Ohio Junior.....	25	80	2 00	Yellow Globe.....	5	15	25
American Wonder.....	25	75	1 75	Orange Jelly or Golden Ball.	5	15	25
Rural New Yorker No. 2....	25	75	1 75	RUTA BAGAS—			
Sir William.....	35	90	2 25	Sweet Russian or White Ruta			
PUMPKIN, Sugar.....	Oz.	¼ lb.	Lb.	Baga.....	5	15	25
Tennessee Sweet Potato....	5	15	35	Improved Purple Top Ruta			
King of the Mammoths.....	10	20	60	Baga.....	5	15	20
Calhoun.....	5	15	35	GRASS SEED, Velvet Sod Lawn Grass,			
Large Cheese.....	5	15	30	20 lbs. to bu., 5 lbs. at 17c., 20 lbs.			
Connecticut Field.....	5	10	15	and over at 15c.			
RADISH, Early Scarlet Globe....	5	15	40	Special Lawn Mixture, 14 lbs. per bu.			
Early Long Scarlet, short top	5	12	30	5 lbs. at 14c., 14 lbs. and over at 12c.			
Early Scarlet, turnip rooted..	5	12	30	Kentucky Blue.....			
Early White, turnip rooted..	5	12	30\$0 12 \$0 8			
White Tipped Scarlet, turnip.	5	15	35	Kentucky Blue, Fancy or double ex-			
Chartier.....	5	12	30	tra clean.....	15	12	
French Breakfast.....	5	12	30	Red Top.....	12	8	
White, olive shaped.....	5	15	35	Orchard Grass.....	15	13	
Glass.....	5	15	40	CLOVERS, Alfalfa or Lucern.....	15	10	
White Strasburg.....	5	15	40	Alsike.....	15	10	
Yellow Summer, turnip.....	5	15	40	Scarlet or Crimson.....	12	6	
Early Scarlet Olive.....	5	15	40	White Dutch.....	30	18	
Winter Varieties—				Prices on Grass and Clover Seeds subject to market			
Long Black Spanish.....	5	15	35	variations.			
Rose China Winter.....	5	20	45	BROOM CORN, Improved Evergreen....	5c.,	3c.	
California Mammoth White..	5	20	50	GERMAN MILLET.....	5c.,	2c.	
SALSIFY, Long White.....	10	25	70	KAFFIR CORN.....	5c.,	3c.	
Mammoth Sandwich Island..	10	25	75	SUGAR CANE, Early Amber.....	5c.,	2c.	

FLOWER SEEDS.

Postage extra on ¼ lb. or over.

ALYSSUM.

Little Gem. Very dwarf, pure white, ¼ oz. 15c.; oz. 40c.

Sweet. oz. 15c.

ASTERS.

Our Aster seed is from one of the finest German collections and can be depended upon to produce extra double flowers of fine colors.

TRUFFAUT'S PAEONY FLOWERED PERFECTION.

One of the best for Florist's use, very double, large, and of fine shape.

Carmine 1/8 oz. 35c., 1/2 oz. \$1 25
Pink 1/8 oz. 35c., 1/2 oz. 1 25
White 1/8 oz. 35c., 1/2 oz. 1 25
Light Blue 1/8 oz. 35c., 1/2 oz. 1 25
Crimson 1/8 oz. 35c., 1/2 oz. 1 25
Mixed 1/4 oz. 50c., oz. 1 50

IMPROVED VICTORIA.

White 1/8 oz. 40c., 1/2 oz. \$1 50
Pink 1/8 oz. 40c., 1/2 oz. 1 50
Blue 1/8 oz. 40c., 1/2 oz. 1 50
Scarlet 1/8 oz. 40c., 1/2 oz. 1 50
Crimson 1/8 oz. 40c., 1/2 oz. 1 50
Mixed 1/4 oz. 75c., oz. 2 25

COMET.

Deep Rose 1/8 oz. 50c., 1/2 oz. \$1 50
Rose and White 1/8 oz. 50c., 1/2 oz. 1 50
Light Blue 1/8 oz. 50c., 1/2 oz. 1 50
White 1/8 oz. 60c., 1/2 oz. 2 00
Mixed 1/4 oz. 75c., oz. 2 00

WHITE BRANCHING.

1/8 oz. 30c., 1/2 oz. \$1.00

SEMPLÉ'S BRANCHING.

Flowers, large, double, on long stiff stems, excellent for cutting.

White 1/8 oz. 30c., 1/2 oz. \$1 00
Pink 1/8 oz. 30c., 1/2 oz. 1 00
Lavender 1/8 oz. 30c., 1/2 oz. 1 00
Mixed 1/4 oz. 50c. oz. 1 50
Dwarf Queen, Earliest of all white, double, branching, fine for cut flowers.	1/8 oz. 40c., 1/2 oz. \$1.25.
Dwarf Pyramidal Boquet, mixed,	1/8 oz. 25c., 1/2 oz. 75c.
Dwarf Chrysanthemum, mixed,	1/8 oz. 30c., 1/2 oz. \$1.00.
Tall, Mixed	1/4 oz. 25c., oz. 75c.

BALSAM, Perfection Double White, for florists' use,	1/4 oz. 35c., oz. \$1.00.
Perfection Double Pink,	1/4 oz. 35c., oz. \$1.00.
Splendens, brilliant scarlet,	1/4 oz. 35c., oz. \$1.00.
Camellia flowered, mixed,	oz. 60c.
Double, mixed,	oz. 25c.

CALLIOPSIS, Golden Waveoz. \$0 15
Fined mixedoz. 10

CALCEOLARIA, Grandiflora Tigrinia, large size, spotted and tigered, trade pkt. \$1 00

CALENDULA, Meteor, striped.....oz. 15
 Prince of Orange.....oz. 15
 Pongei (fl. pl.).....oz. 15

CANDYTUFT, White.....per oz. 10c., 1/4 lb. 25
 Empress, very large, pure white.....oz. 30
 White Rocket.....oz. 10
 Crimson.....oz. 15
 Purple.....oz. 15
 Fragrant White.....oz. 10
 Fine Mixed.....oz. 10c., 1/4 lb. 25

CANNA, Dwarf, large flowered French Mad. Crozy.....oz. 25
 Extra choice mixed.....oz. 25

CARNATION, Marguerite, white.....1/8 oz. 40
 Marguerite, finest mixed.....1/8 oz. 25

CENTAUREA, Gymnocarpa.....1000 seeds 25

CINERARIAS, Hybrida, choice mixed, trade pkt. 50
 Grandiflora, large flowered, prize, trade pkt. 1 00

COBEA SCANDENS,oz. 50

CONVOLVULUS MAJOR, mixed, oz. 10c.,1/4 lb. 20

NEW JAPANESE GIANT MORNING GLORY, mixedoz. 40

COSMOS, Pearl, white.....1/4 oz., 20c., oz. 60
 Pink.....1/4 oz., 20c., oz. 60
 Choice mixed.....1/4 oz. 15c., oz. 50
 Mamm'th Perfect'n, mixed, 1/4 oz. 30c., oz. 1 00

CYCLAMEN, Persicum, choice mixed. 1/4 oz. 60
 Persicum, Giganteum, finest mixed:100 seeds \$1 00, 1000 seeds 9 00

DAISY, Double red.....trade pkt. 50
 Double white.....trade pkt. 50
 Double mixed.....trade pkt. 50

DELPHINIUM FORMOSUMoz. 50
 Choice Hybrids, mixed.....oz. 35

DIANTHUS, or Pinks, Chinensis, choice mixed double.....oz. 20
 Heddwigii, double mixed.....oz. 75
 Heddwigii, double white.....oz. 60
 Imperialis, double mixed.....oz. 70
 Laciniatus, double mixed.....oz. 75
 Diadematus, double diadem.....oz. 70
 Heddwigii Alba flore pleno.....oz. 75

GAILLARDIA GRANDIFLORA.....oz. 50
 Fine mixed.....oz. 20

GLOXINIA, Fine mixed.....trade pkt. 1 00

HOLLYHOCKS.
 Choice double mixed.....1/4 oz. 25c., oz. 75
 Choice double red.....1/4 oz. 30c., oz. 1 00
 Choice double white.....1/4 oz. 30c., oz. 1 00
 Choice double pink.....1/4 oz. 30c., oz. 1 00
 Choice double yellow.....1/4 oz. 30c., oz. 1 00
 Double mixed.....1/4 oz. 20c., oz. 60

LOBELIA, Erinus Speciosus, deep blue trailing variety.....1/8 oz. 15

LOBELIA, Crystal Palace Compacta, best for bedding1/8 oz. 40

MARIGOLD, Eldorado.....oz.	40
Pride of the Garden.....oz.	75
Double African.....oz.	20
Double French.....oz.	20
MAURANDIA, Mixed.....trade pkt.	25
MIGNONETTE, Machel.....oz.	40
Miles' Spiral.....oz.	15
Parsons' White.....oz.	30
Grandiflora, large flowering.oz. 10c., ¼ lb.	15
Golden Queen.....oz.	25
NASTURTIUM, Tall Mixed....lb. 75c. oz.	10
Scarlet.....oz.	10
Crimson.....oz.	15
Pearl white.....oz.	15
Yellow.....oz.	15
NASTURTIUM, Dwarf Mixed .lb. 80c., oz.	10
King of Tom Thumbs, scarlet.....oz.	20
Pearl white.....oz.	15
Rose.....oz.	20
Dark maroon.....oz.	20
Yellow.....oz.	15
Empress of India.....oz.	20
Crystal Palace Gem.....oz.	15
SUPERB GIANT PANSIES, choice mixture.	
..... ¼ oz. \$1 50, oz.	5 00
PANSIES, Emperor William, deep blue...oz.	1 00
Gold margined.....oz.	1 00
Lord Beaconsfield.....oz.	1 00
King of the Black.....oz.	1 00
White.....oz.	1 00
Yellow.....oz.	1 00
Mahogany colored.....oz.	1 00
Belgian Striped.....oz.	1 00
Coquette de Poissy.....½ oz.	1 75
Havana Brown.....oz.	1 00
Purple with white edge.....oz.	1 00
Quadricolor.....oz.	1 00
Victoria.....oz.	2 00
Sky Blue.....oz.	1 00
Extra choice mixed.....oz.	1 00
Extra fine mixed.....oz.	75
Our Excelsior Strain. Noted for large flowers, very uniform in size, with thick velvety petals and great variety of color.....oz.	2 50
PETUNIA, Double Fringed, Crandiflora Fim- briata, fl. pl.....1000 seeds	1 50
Single large flowered New Giant Ruffledtrade pkt.	75
Single large flowered, fringed.....trade pkt.	50
Single Striped and Blotched...trade pkt	25
Single mixed.....¼ oz.	25
PHLOX DRUMMONDI GRANDIFLORA,	
Pure white.....¼ oz. 25c., oz.	75
Scarlet.....¼ oz. 25c., oz.	75
Striped, red and white.....¼ oz. 35c., oz.	1 00
Crimson.....¼ oz. 35c., oz.	1 00
Rosea.....¼ oz. 25c., oz.	75
Mixed.....¼ oz. 20c., oz.	60
POPPY, Am'can Flag.....trade pkt. 20c., ½ oz.	40
Rosy Morn.....trade pkt. 20c., ½ oz.	40
Shirley.....trade pkt. 15c., ½ oz.	30
Golden Gate.....trade pkt. 10c., ½ oz.	25
Mikado.....trade pkt. 10c., ½ oz.	25
Snowdrift.....trade pkt. 10c., oz.	25
Iceland.....trade pkt. 25c.	
POPPY, Carnation flowered mixed.....oz.	10
Pæonia flowered mixed.....oz.	10
PORTULACA, Double mixed.trade pkt. 35c.,¼ oz.	75
Single mixed.....trade pkt. 10c., oz.	30

PRIMULA, SINENSIS FIMBRIATA.	
Single white.....trade pkt. \$1 00	
Single red.....trade pkt. 1 00	
Choice mixed.....trade pkt. 1 00	
RICINUS ZANZIBARENSIS, Mixed, oz. 15c.,¼ lb.	45
SALVIA SPLENDENS...trade pkt. 25c., oz.	1 50
SMILAX .. oz. 50c., ¼ lb.	1 50
STOCKS, Dwarf German, 10 weeks, double flowered, mixed.....¼ oz. 35c., oz.	2 00
Snowflake.....½ oz.	75
Giant Perfection, 10 weeks.....½ oz.	50
	Oz. ¼ lb. Lb.
SWEET PEAS—Adonis..... 5 15 \$0 35	
American.....10 30 1 00	
Apple Blossom..... 5 15 30	
Blanche Ferry..... 5 15 30	
Extra Early Blanche Ferry.....10 25 65	
Blanche Burpee..... 5 15 40	
Blushing Beauty..... 5 15 40	
Boreaton..... 5 15 35	
Butterfly..... 5 15 30	
Cardinal..... 5 15 30	
Countess of Radnor..... 5 15 40	
Dorothy Tennant..... 5 15 45	
Duke of Clarence..... 5 15 45	
Duchess of Edinburgh..... 5 15 35	
Emily Henderson..... 5 15 30	
Firefly.....10 20 65	
Grand Blue..... 5 15 30	
Her Majesty.....10 20 60	
Indigo King..... 5 15 35	
Invincible Carmine..... 5 15 35	
Isa Eckford..... 5 15 35	
Katherine Tracy.....10 25 80	
Lady Beaconsfield..... 5 20 50	
Lottie Eckford..... 5 15 40	
Mrs. Eckford..... 5 15 45	
Mrs. Sankey..... 5 15 40	
Monarch..... 5 15 35	
Orange Prince..... 5 15 45	
Ovid..... 5 15 50	
Peach Blossom..... 5 15 50	
Princess of Wales..... 5 15 45	
Princess Beatrice..... 5 15 35	
Primrose..... 5 15 35	
Queen of England..... 5 15 30	
Queen of the Isles..... 5 15 35	
Royal Robe..... 5 15 40	
Splendor..... 5 15 40	
Stanley..... 5 15 45	
Venus..... 5 15 45	
Eckford's Mixed..... 5 15 30	
Choice Mixed..... 5 10 18	
SWEET WILLIAM, Single Mixed.....oz.	15
Double Mixed.....oz.	35
THUNBERGIA.....oz.	35
VERBENA, Pure White.....¼ oz. 35c., oz.	1 00
Scarlet.....¼ oz. 35c., oz.	1 00
Blue.....¼ oz. 35c., oz.	1 00
Striped.....¼ oz. 35c., oz.	1 00
Extra choice mixed.....¼ oz. 40c., oz.	1 25
Mammoth Flowered.....¼ oz. 50c., oz.	1 50
Fine Mixed.....¼ oz. 15c., oz.	50
ZINNIA, Double Scarlet.....oz.	40
Double Purple.....oz.	40
Double Orange.....oz.	40
Double Pure White.....oz.	40
Double Curled and Crested.....oz.	1 50
Extra Double Tall Mixed.....oz.	25
Extra Double Dwarf Mixed.....oz.	60
Zebra or Striped.....oz.	60